



Hope Cement Works: A £61 Million Contributor to the Peak Park Economy



16,480 tonnes of concrete

6 storey city centre office building



**12 tonnes of mortar
200 tonnes of aggregates**

House



25 mt of aggregates/minerals

HS2



53,000 tonnes of concrete

Community hospital



250,000 concrete segments

Crossrail



15,000 tonnes of concrete

School

Hope Cement Works:

A £61 million contributor to the Peak Park economy

Earlier this year Breedon Group commissioned an updated **Economic Impact Assessment** report on its Hope Cement Works from global management, engineering and development consultancy Mott Macdonald. The aim was to establish how much the Works contributes, both financially and in terms of employment, to the economy of the Peak District National Park (PDNP).

First, some background...

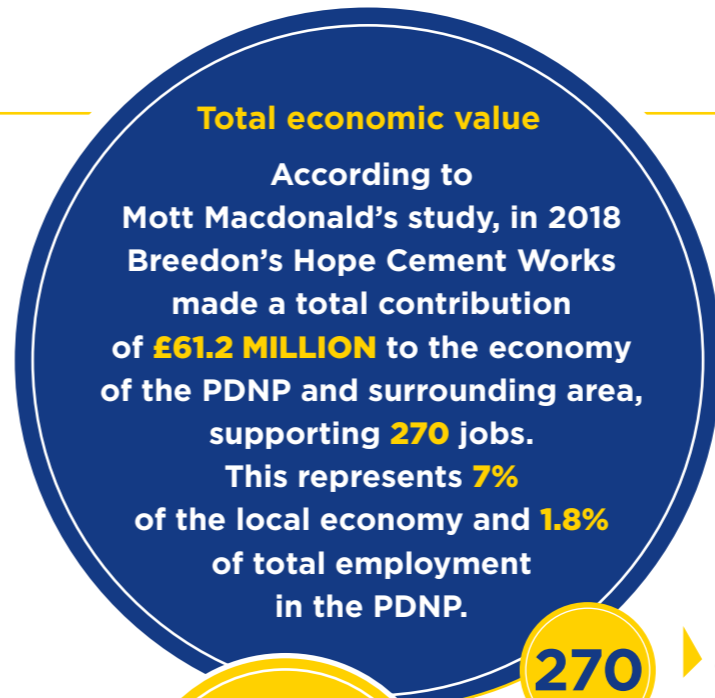
There is a long-established mineral and aggregates industry in the PDNP and wider Derbyshire Dales and High Peak area. From quarries extracting stone and shale, to large-scale cement production and the wide range of bespoke manufacturing activities which support them, the industry has shaped local economic history and geography over many generations.

The PDNP plays a key role in the broader UK cement industry, which is a vital part of the national economy providing the materials needed to construct housing, commercial buildings, transport links, hospitals, schools and a host of other infrastructure schemes. Cement production in the UK is currently running at more than nine million tonnes per annum and Breedon's Hope Cement Works accounts for around 16% of this production.



● PEAK DISTRICT NATIONAL PARK (PDNP)

○ PDNP 10 MILE BUFFER

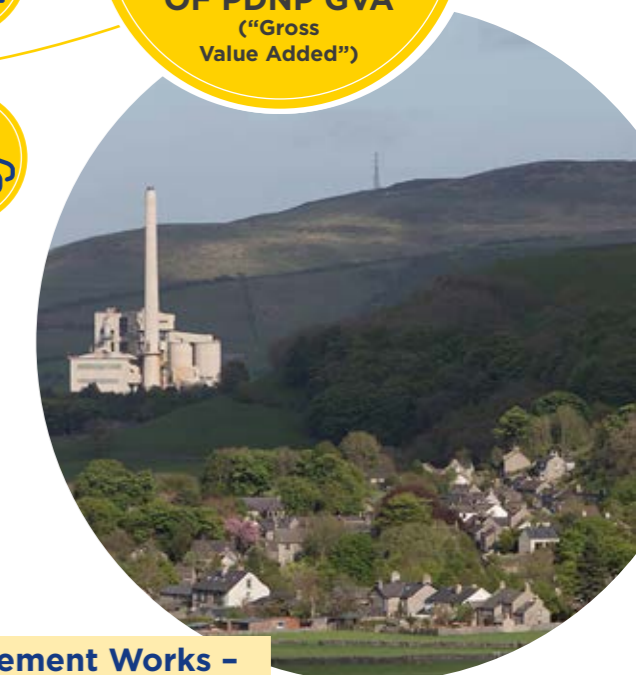
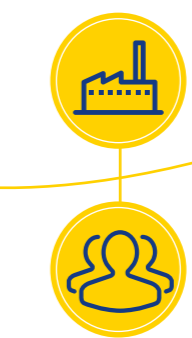
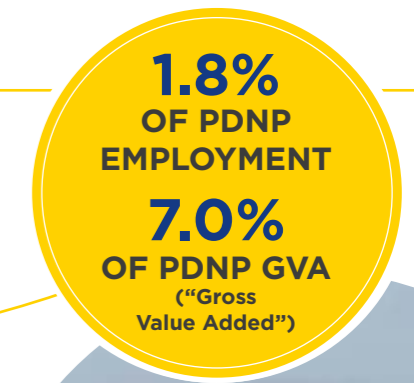


270
TOTAL JOBS
(includes 2 jobs from community and social impacts)

202
DIRECT JOBS

52
INDIRECT JOBS

14
INDUCED* JOBS



Hope Cement Works - a major economic asset

Hope Cement Works sits in the heart of the PDNP, in the Hope Valley 12 miles north-east of Buxton and 15 miles from Sheffield. It has been manufacturing cement on this site for more than 90 years and its state-of-the-art plant is capable of producing around 1.5 million tonnes of cement every year.

According to Mott Macdonald's report, in 2018 the site directly or indirectly employed 270 people, contributing over £61 million to the local economy and accounting for 7% of the PDNP's total economic output.

This represents an increase of 35% over 2013, the year for which Mott Macdonald produced its first report, when the Works contributed around £45 million with roughly the same number of direct employees.



Children at the Forest School, Hope Works.

Source: Sustainable Development Report 2017, Mineral Products Association, 2017

Source: Mott MacDonald using Breedon data.

* Jobs created as a result of expenditure by our direct and indirect employees on local goods and services within the PDNP.

(TOP INFOGRAPHIC) Source: Mott MacDonald. Note employment contribution calculated as % of total FTEs (full-time equivalents), estimated as 15,200

Hope Cement Works:

A £61 million contributor to the Peak Park economy



£59.0m
DIRECT GVA

£0.5m
INDUCED
GVA

£1.7m
INDIRECT
GVA

£61.2m
TOTAL
GVA

Supporting local PDNP jobs and industry

The economic benefits provided by the Hope Works extend well beyond its direct footprint: the site also supports local jobs and industry across the PDNP and wider area.

- o **Nearly half the Works' direct employees live within the PDNP itself, supporting the area by spending their wages locally ("induced GVA"); and**
- o **Around £4.7 million of supplier expenditure by the site is with firms based in the PDNP, notably local industry contractors and manufacturing companies supplying specialist products and services – everything from welding, scaffolding, engineering and joinery to mechanics, haulage, fabrication, photography and catering.**

These indirect purchases of goods and services along the supply chain, coupled with the spending of direct and indirect employee wages, create a ripple effect and support further rounds of economic activity. In 2018 Hope Cement Works supported well over 60 additional jobs from these indirect and induced impacts, contributing another £2.1 million to the local economy.

This means that for every 10 jobs created in the PDNP, nearly three additional jobs are created from the 'multiplier' impact of the site.

Wider social and economic activities

Hope Cement Works maintains a long tradition of actively engaging with the local community through its many social and communal activities. These include access for local residents to the Hope Works Estate and the Earles Sports & Social Club, on-site open days and tours and a range of local business and community partnerships.

Taking into account the monetising of rental savings, volunteer time and charitable donations and sponsorships, the site invested the equivalent of well over £160,000 in the community in 2018, supporting two additional jobs within the PDNP and contributing a further £60,000 to the local economy.

